



TELEONIX

WEB BASED REMOTE MONITORING SYSTEM



Features

- Distantly monitor stock levels at any number of remote sites on the internet.
- Works with weighing systems, level detection and other types of measurement systems.
- System does not need to use a PC at the remote site.
- Automatically alerts the supplier by e-mail of pre-set content levels, or view at anytime.
- GPRS connection.
- View graphical representation of each system being monitored.
- View graphical display of alarm statuses.
- A short message service (SMS) is available as an option.
- Easily fitted to existing systems.
- Built - In security protection.
- Battery back-up in the event of power failure.

Description

The **Teleonix** system allows a supplier to use the internet/web browser to distantly monitor weighing systems or other measurement devices at one or numerous remote sites. The system can be configured so that the supplier can be automatically alerted to changes in content level for replenishment or stock control purposes by e-mail. Alternatively, the level status can be viewed at any time.

The supplier's PC can use a graphical representation that shows any of the remote sites and the actual weight content or the alarm status of each system being monitored. A short message service (SMS) is also available to alert designated mobile phone users to pre-set alarm changes at any site being monitored.

If required, historical data and trending can be logged at the remote sites for easy importing into spreadsheets or databases such as Excel or Access.

ENGINEERING SPECIFICATIONS

TECHNICAL DATA - REMOTE TELEMETRY UNIT (RTU)

Power Supply

100-240 Vac 50/60 Hz 0.3 A with 2V 2.5 Ah SLA rechargeable cell back-up
Various alternative power supply options are available

Data Logging

Log interval: 1 min - 100 days
Log value: Value or time average
Log on: Interval, input change or event
Time Stamp: Date and time in Universal Coordinated Time (UTC)
Internal Clock: Synchronised to 2 NTP time-servers daily

Data Communications

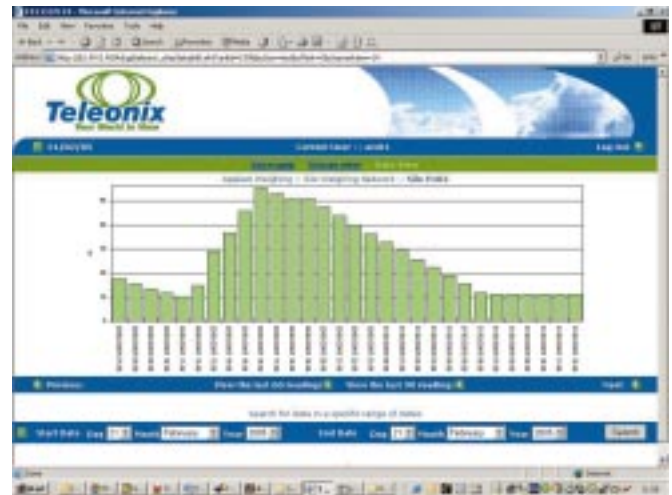
Input voltage: 0 - 50 Vdc
Input current: 5 mA typical at 5 Vdc input
Supply voltage: 5V typical (for volt-free contacts)

Absolute Maximum Ratings

Input voltage: 100V

General

Environment: -10 to +50 degrees C, 5 - 95% RH
Protection: Available in ratings from IP55 to IP67
Enclosures: Painted mild steel, stainless steel or plastic



In the interest of continued product development, Applied Weighing reserves the right to alter product specifications without prior notice.

APPLIED WEIGHING INTERNATIONAL LIMITED, Unit 5, Southview Park, Marsack St, Caversham, Reading, England RG4 5AF

Tel: (0118) 9461900 Fax: (0118) 9461862 Email: sales@appliedweighing.co.uk Web site: www.appliedweighing.co.uk

APPLIED WEIGHING EUROPE, Honingstraat 13, 2330 Merksplas, Belgium Tel: 003214652837 Fax: 003214652943 Email: applied.weighing.europe@telenet.be